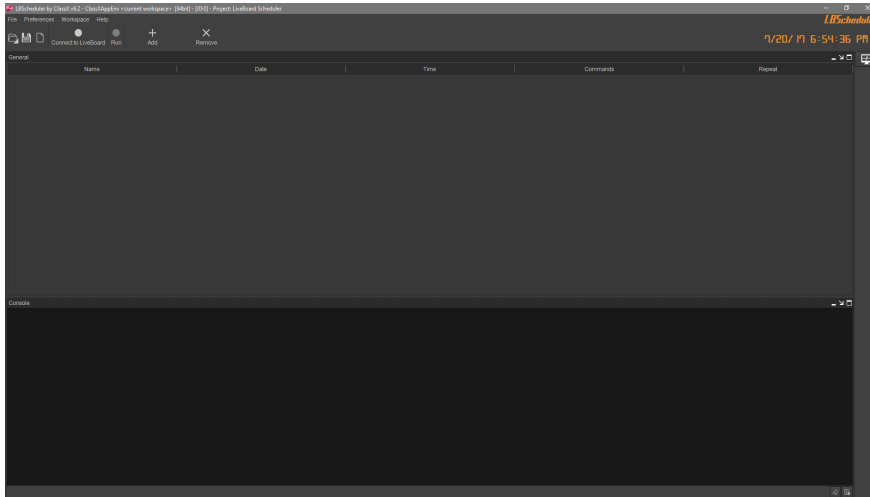


LBScheduler



User Manual

rev. 09/08/2017

Style and Innovation with



ClassX srl
Via Del Tiglio 91
56012 Calcinaia (PI) ITALY
Tel. Fax. ++39 0587 48 81 28
E-Mail: info@classx.it
Home-Page: www.classx.it
ORIGINAL EDITION: June 2017

Copyright:

No part of this manual may be reproduced or transmitted in any form or by any means, electronic or mechanical, including photocopying and recording, for any purpose without the express written permission of a duly authorized representative of ClassX srl.

The information contained within this manual is believed to be true and correct at the time of publication.

ClassX, CastaliaCG, MoreCG, CoralCG, CGPayout, LiveBoard, LBScheduler, SGL, TemplateActions, LiveStadium, FrameMarker, MediaPlug, PageRecall, SocialServer, SportsGraphics, ContentPayout, ThemeChannel are registered trademarks of ClassX srl.

All other brand names are trademarks of their respective holders.

© Copyright 2000-2017 ClassX srl. All rights reserved. Unpublished rights reserved under International copyright laws.

Introduction

This software has been designed for schedule several LiveBoard operators, in a specific temporal period.

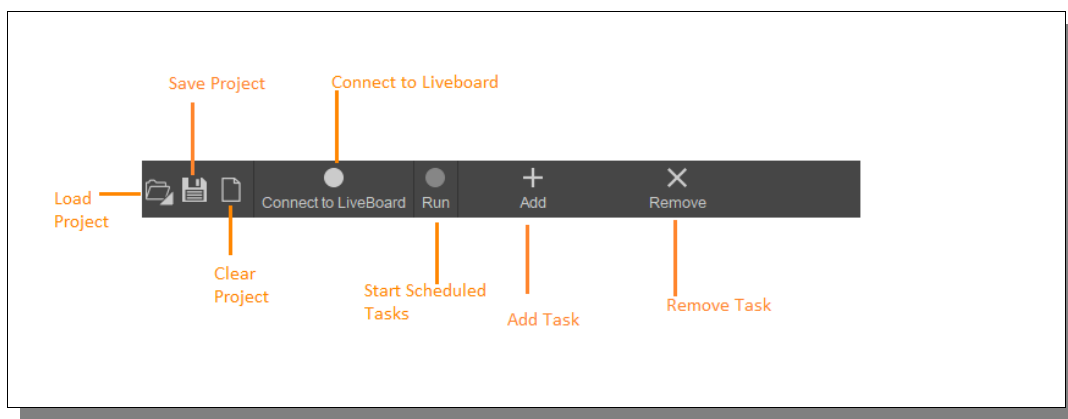
Installation:

- Download *ClassX Broadcast Install 6.x* from ClassX's Dashboard.
- Install *ClassX Broadcast Install 6.x.exe*
- The application is installed in C:\ClassX-Applications_v6.x\LBScheduler

Requirements:

- Network connection
- ClassX LiveBoard application connected on the same network

User Interface:



Load Project:

The “Load” project button gives the possibility to load a saved project. This button allows you to access to the recent loaded projects using the mouse right click.

Save Project:

The “Save” project button saves the current project into default LBScheduler project folder. The default path can be changed by preferences.

Clear Project:

The “Clear” project button clears all items in the current project.

Connect to LiveBoard :

The “Connect to LiveBoard” button create a TCP/IP connection with LiveBoard. If the LED inside the button became green the connection is done and LBScheduler is connected. If the LED is red the connection is not working

Run:

The “Run” button starts the events scheduling. If the run button is not pressed the events scheduled will not start.

Add:

The “Add” button adds a new event to the list.

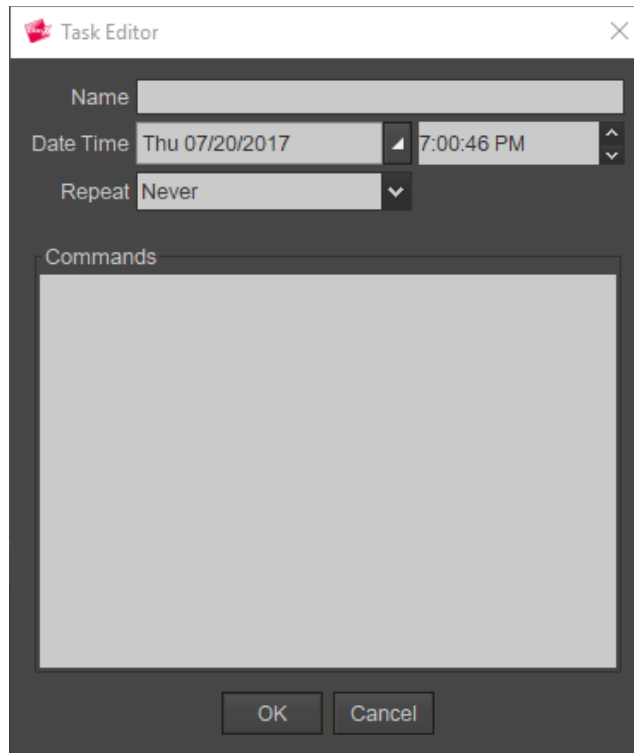
Remove:

The “Remove” button removes all events selected into the list.

Event Creation:

A event can be created and configured from the following interface. The “Task editor” is shown when a new event is created or a existing event is edited.

The Task Editor is composed like below:



Name:

The name field gives a custom name to the event.

Date and Time:

Date and time fields define the event execution period.

Repeat:

The Repeat field define the event repetition. An event can be repeated:

- Never: the event is executed just one time
- Daily: The event is repeated every day at the same time
- Weekly: The event is repeated the same day and the same time of week
- Monthly: The event is repeated every month at the same time.
- Custom: Using the custom repetition is possible to choose a specific day week for event execution. i.e. Choosing Monday, the event will performed only if the current day is Monday

Commands:

The commands area defines the commands to send to LiveBoard when the event is executed. Using the mouse right click a pop-up will show all available commands.

When the event parameters are set, press the “OK” button to create the event. After the created event will appear in the event list like in the following picture.

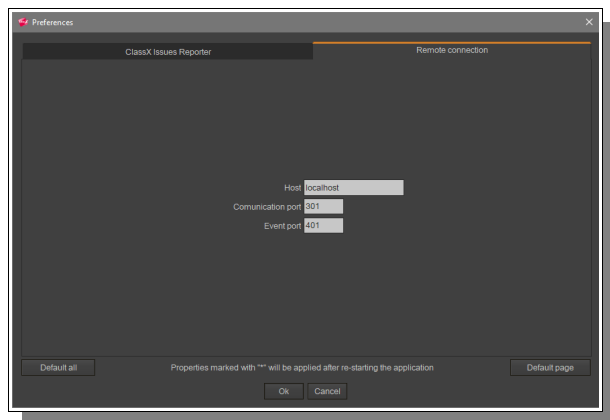
Name	Date	Time	Repeat	Commands
ClassX	7/21/17	10:01:18 AM	Never	LBC_PLAYCONTENT CONTENTNAME="A"

Remote Connection Configuration:

In order to use PageRecall, we need a TCP/IP connection with ClassX LiveBoard. We can configure this connection in the Preferences under the “Remote connection” tab.

By default, LBScheduler is set up to work in *localhost* environment, but you can also connect PageRecall over the network by typing in the remote LiveBoard IP address.

After the configuration is done, press the “OK” button to save your preferences.



Loggin system:

LbScheduler has a logging system that allow the user to track the software activity. The logging system is divided in “**File**” logging and “**Console**” logging.

File:

The file loggin is disable by default. It can be enabled from the preferences under the check flag “ClassX LBScheduler protocol log” in the Misc settings.

When this option is enabled all processed events are saved in a log file, stored in *ClassX_Applications_v6\lbscheduler\log*

Console:

The Console logging shows the recent events processed by LBScheduler. The console is not mandatory for the software usage, it can be hide using the reduce icon in the Console right corner.

Note: The console has a limit number of rows, if you want check all events we suggest to enable the “File” logging system.